



Newsletter 11 January 2024

Oakengates Nursery School

www.oakengatesnurseryschool.co.uk

oakengates.admin@taw.org.uk

01952 387910

Health Protection Advice—Measles

Our environmental health officer from Telford and Wrekin's Health Protection Hub has asked us to share the information below which sets out ways to protect your children this winter.

Cases of measles are increasing in the UK, including in the West Midlands, and it's likely that there will be cases in Telford in the near future.

Measles is a viral illness that can be serious and sometimes fatal. Spending 15 minutes with someone with measles is enough to get the virus. Symptoms of measles include high fever, runny nose, cough, red and watery eyes, small red spots with a bluish-white centre inside the mouth. A rash can appear later, usually on the face, upper neck, hands and feet, fading after 5 to 6 days. If you've not been vaccinated against measles you can be at risk, but it's most common in young children. Someone with measles can spread the virus up to 4 days before a rash appears, and up to 4 days after.

Measles can have serious and sometimes fatal consequences, so make sure you and your children are up to date with MMR vaccinations, and ask your GP about catch-up jabs if needed. The MMR vaccine is highly effective at protecting against measles.

If you are unsure if your child is up to date with all their routine vaccinations you can check their Red Book (personal child health record) in the first instance. If you are still not sure, or if you need to bring your child up to date with their vaccines, you should contact their GP practice to check and book an appointment.

If you are concerned that your child has measles, please call your GP in the first instance, to reduce the risk of passing the disease to others in the waiting room. More information on measles can be found and information on the MMR vaccine can be found by following the links below.



[Measles - NHS \(www.nhs.uk\)](https://www.nhs.uk)

[MMR \(measles, mumps and rubella\) vaccine - NHS \(www.nhs.uk\)](https://www.nhs.uk)

Online applications for school admissions September 2024 close on 15th January 2024.

Please could you let us know which school you have applied for by filling in the simple survey below.

<https://forms.office.com/e/SAiPNWp04B>

This information will help us to prepare for a smooth transition to school.

If you have not yet applied for a school place please click on the link to access Telford and Wrekin's School Admissions Page.

https://www.telford.gov.uk/info/20026/school_admissions

<https://forms.office.com/e/heHqwAMhK6>



Spring Term 2024

Tuesday 9th January to Friday 22nd March

Half term—Monday 12th February to Friday 16th February

Easter Holiday—Monday 25th March to Friday 5th April

PD day Monday 8th April

Summer Term 2024

Tuesday 9th April to Friday 19th July

Half term—Monday 27th May to Friday 31st May

PD day Monday 3rd June

Please go to our website to access all term dates for the academic year 2023-2024

<https://www.oakengatesnurseryschool.co.uk/media/46119/term-dates-2023-2024.pdf>

Nursery closure to all children

Friday 29th March & Monday 1st April

Monday 6th May & Monday 27th May.



School Readiness drop-in session.

A member of the School Readiness Health Visiting Team will be available on **Wednesday 31 January** at drop off times. (8.45am and 12.30pm) for toddler and preschool children.

The health visitor will be able to give advice, support, and signpost to resources on toileting, behaviour, sleep, fussy eating and dental health. By identifying development concerns early, support, targeted interventions and early referrals can be put in place to ensure your child is equipped and ready for school.

Please let us know if you can make it by clicking on the link below.

<https://forms.office.com/e/pXqVzftfAE>

This term, our theme in nursery is called:

Let's Pretend



Toddler Room

This week in the Toddler room we will be pretending to be bakers sharing the story "the gingerbread man".

We will be decorating the gingerbread man templates on the finger gym, using loose parts and pom poms.

On the playdough table we will be creating our own gingerbread men saying the repeated phrase as we create. "run run as fast as you can....."

Outside we will be moving along the obstacle course to get away from the greedy fox moving in different ways.

Our nursery rhyme of the week is "I am the bakers man".



Preschool Room

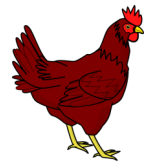
This week in the pre-school room we will be embracing our next theme 'Let's Be a builder and a baker'.

The children have been learning about 'The Three Little Pigs', 'The Little Red Hen' and 'The Three Billy Goats Gruff'.

On the playdough table we will be creating our own houses using different materials to decorate them and on the finger gym the children will be adding buttons using their 'Tommy thumb' and 'peter pointer'.

On the writing table we will be drawing our own houses, using our own photos.

Our nursery rhyme of the week is "This Little Piggy".



Due to the continuing cold weather, please send your child to nursery with a warm coat, hat, gloves and scarf.

PLEASE NAME CLOTHING TO HELP US MAKE SURE THAT THEY RETURN HOME WITH THE CORRECT OWNER!

Baby Room

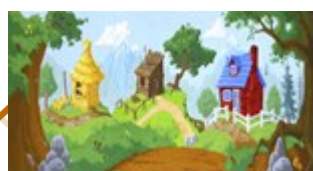
This week in the baby room, our focus books will be 'The Gingerbread Man' and 'The Billy Goats Gruff'.

By using object reference to match the animals and parts of the stories, the children will explore new sounds and words within the environment.

We will pull, stretch, mould and make gingerbread shapes with the ginger playdough. We will also have gingerbread men for babies to explore in the home corner and place on the baking tray to put in the oven. Lets build homes for the three little pigs to stay in. We will be exploring the feel of the three materials and then begin to use them to build with..

We will be filling and emptying with water and sand play inside and outside. Recipes and cookbooks in the environment linking to the song 'I am a Bakers Man'.

We will continue to promote hand washing and drying hands, learning routines before and after mealtimes and baking.



Nursery Rhymes of the week

Click on the image to access the song.



Other Useful Information



SEND Support & Play For Early Years Families

Our group supports parents and carers within Telford & Wrekin, whose child has special educational needs and/or a disability, including parents whose children have a diagnosis of Autism

Come and join us for our fortnightly group!

1st Monday of the month, 9:15am to 10:45am @ our Family Zone, Hazledine House.

3rd Monday of the month, 9:15am to 10:15am @Dobbies Soft Play, Donnington (booking essential to secure your free play)

Term time only & excluding Bank Holidays

Telford SENDIASS and Telford Childrens Autism Hub 4EYF offers you:

- A safe play area for children where parents can relax and have a chat.
- Guest speakers from relevant organisations to talk the support they can provide.
- A non-judgmental environment for the children to play, socialise and be themselves.
- An understanding environment filled with support, friendship & advice.



To register for our Early Years SEND Support group please call 01952 260062 or email childrensautism@tandwcvcs.org.uk

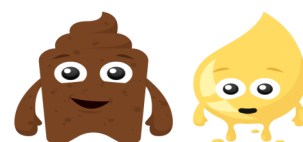
A project of Telford & Wrekin CVS
Suite 12 to 15 Hazledine House, Central Square
Telford Centre, Telford, TF3 4JL




The Children's Bowel & Bladder Charity

ERIC – the children's bowel and bladder charity are hosting online parent/carer workshops over the next month via webinars.

Click [here](#) or on the image below to access the website to sign up



Some topics include:

- ◆ How to tackle potty and toilet avoidance
- ◆ How to help your child relax for toilet sits
- ◆ How to go about toilet training when your child has additional needs
- ◆ How to manage your child's

Shropshire and Telford and Wrekin Dental Advice Line

Do you have an urgent dental problem or need dental advice?



Are you looking for an NHS dentist for routine care?

Monday to Friday
0800-2100

01743 237916



Shropshire Community Health **NHS**

Telford Public Health Nursing Service



Healthy you, Healthy Future

Telephone Number 0333 358 3328

Text 07520 619 053

School nurse 07520 619 051

Follow on twitter

@ShropPHNurse **Open 9am-4.30pm**
excluding bank holidays

Do you know what to expect in the Early Years Foundation Stage?



Use the QR code below to access a guide for parents

