



Oakengates Nursery School

Newsletter

Summer Term: Week 5



A message from the Headteacher

Ofsted Inspection Update – Tuesday 3 June 2025

Dear Parents and Carers,

Following last Tuesday's Section 8 Ofsted inspection, I want to say how incredibly proud I am of our children and staff. The inspectors saw our motto 'Love, Laugh, Learn' clearly embedded in everything we do.

It was a pleasure to welcome visitors into our brand-new building and to share the rich learning opportunities we offer our children each day.

We look forward to sharing the full report with you once it is published. In the meantime, thank you for your continued support and for the wonderful feedback you shared through Ofsted's Parent View, your positive comments reflected the strong partnerships we value so highly.

Warm regards,

Mrs Jenny Gascoigne

Executive Headteacher for the Federation





A message from the Early Years Lead

Dear Parents and Carers,

What a fantastic week we have had as we head into the last part of the summer term, filled with excitement and learning as we explored the fascinating world of minibeasts! The rain this week provided a wonderful opportunity to observe how these tiny creatures interact with their environment, enhancing our understanding of the natural world.

Our children in pre-school also enjoyed engaging in woodworking activities, where they crafted their own minibeast creations, nurturing their creativity and fine motor skills.

Looking ahead, we have a host of important activities planned for the coming weeks, so please be sure to check Parentzone for updates and details on how you can be involved.

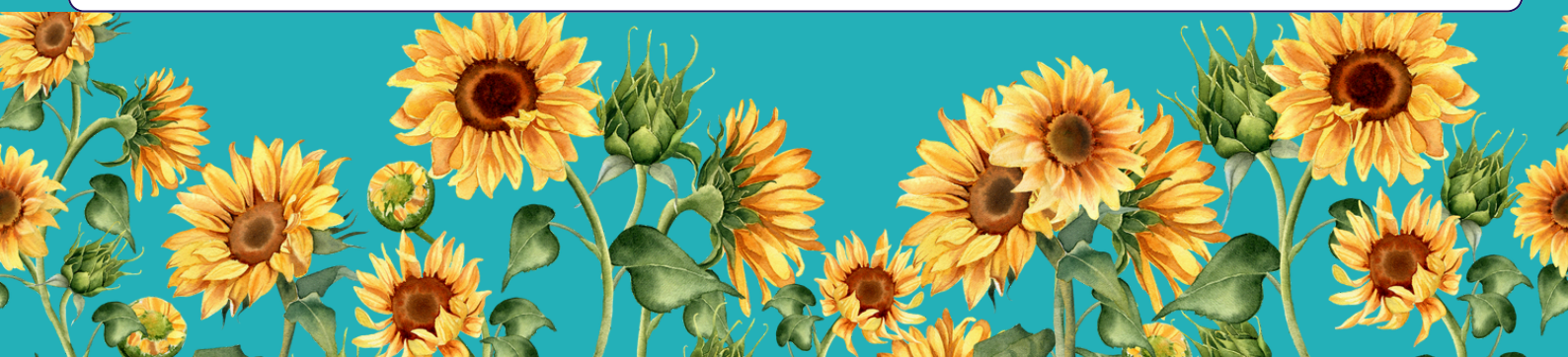
As always, thank you for your continued support and for being an integral part of our nursery community.

Enjoy your weekend,

Kind Regards,

Hannah Firmstone

Early Years Lead & SENCo



Dear Parent/Carer,

We all wish for children to have a great start in life and for them to take part in fun, fulfilling experiences.

As their parent or carer, you do a brilliant job supporting your child to learn and grow during those early years which also helps them prepare for school.

Their development is important to us too and that's why we've created 5 by 5.

5 by 5 sets out a range of adventures to explore with your child before the age of five to help them be happy, healthy and active.

The adventures are grouped into five themes and are designed to support your child to develop and grow, find their voice, make friends, be curious and creative and build connections with the world around them.

We suspect that you have already tried some of the adventures with your child, but why not see if you can do them all.

Many are no or low cost and can be done in and around the home or at venues across Telford and Wrekin, including libraries, parks and community groups.

We'll be working closely too with early years providers, schools, community providers, local charities, Family Hubs, and health providers as we roll out the scheme.

For further information visit 5by5.telford.gov.uk where you can view the full list of adventures and track your child's progress with a downloadable 5 by 5 adventure card.

We hope you will enjoy taking part as a family!



Councillor Lee Carter
Leader, Telford & Wrekin Council



Councillor Shirley Reynolds
Cabinet Member for Children,
Young People, Education,
Employment and Skills

5BY5 CHECKLIST
Tick them off as you go

The adventures will support your child's growth, development and confidence to help them start school.
How many have you already tried?
How many more can you do?

Develop and grow

- ☐ Eat a rainbow
- ☐ Splash in a swimming pool
- ☐ Stamp and scrunch the autumn leaves
- ☐ Grow your own food
- ☐ Walk/hop/skip or run across the Ironbridge
- ☐ Put on own shoes and coats
- ☐ Use a potty or toilet independently
- ☐ Eat with utensils
- ☐ Learn to brush teeth with supervision
- ☐ Visit the town park and use the equipment

Find my voice

- ☐ Share a book and listen to stories
- ☐ Go to Bounce and Rhyme and join the library
- ☐ Learn a nursery rhyme and sing a song
- ☐ Listen to outdoor sounds
- ☐ Explore the sounds that musical instruments make
- ☐ Join my friends in the role play area
- ☐ Play peek-a-boo
- ☐ Blow bubbles and catch them
- ☐ Feed the ducks
- ☐ Teddy bears picnic

Make friends

- ☐ Visit a toddler or community group
- ☐ Go to pre-school
- ☐ Play hide and seek
- ☐ Go on a board game with friends
- ☐ Talk to the baby/toddler in the mirror
- ☐ Draw a picture of your friends
- ☐ Play circle games
- ☐ Build a den
- ☐ Attend an event in the community

Being curious and creative

- ☐ Ride on a bus or train or both
- ☐ Exploring paint
- ☐ Play a musical instrument
- ☐ Get messy with arts and crafts
- ☐ Build a sandcastle
- ☐ Lay on the ground and watch the clouds sail by
- ☐ Dance and sing to music
- ☐ Take a torch and walk when its dark outside
- ☐ Blow a dandelion and make a wish
- ☐ Play with playdough

Building connections

- ☐ Count to five
- ☐ Draw with a pencil
- ☐ Look for letters and numbers on signs in the community
- ☐ Write out a card for family or friends
- ☐ Choose a recipe and bake it with a grown up
- ☐ Make a shopping list and go shopping
- ☐ Go on a bug hunt
- ☐ Plant a sunflower and see how tall it grows
- ☐ Make a snowman
- ☐ Walk in the woods



Help us plan for your child's future by joining our Children with Disabilities Register

- The Children with Disabilities Register is a confidential list of names and basic information about children with disabilities, special or additional needs.
- The Children Act 1989 requires all local authorities to establish a register of children with a disability in their area. This will then be used for statistical information and to assist service planning to meet the needs of children with disabilities and their families, such as plans for accessible homes, SEND school places, inclusive community-based activities, and inclusive council services, to name but a few.
- The information held on the register is confidential and stored on our secure database. Statistical data may be shared with partners to inform local planning. No personal, identifiable data will be shared without consent.

Do all children with disabilities have to be included?

No, inclusion on the list is optional and the details can be added and removed at a parent or carer's request.

Will it affect a child's entitlement to support?

No, support is based on the needs identified as part of an assessment.

A child is eligible to join the Children with Disabilities register if they...

- Have a disability, as defined by the Equality Act as 'a physical or mental impairment that has a 'substantial' and 'long-term' negative effect on your ability to do normal daily activities.' This must be diagnosed by a medical professional.
- Live in Telford or are the responsibility of Telford & Wrekin Council
- Are under 18 years old

What are the benefits of joining the Children with Disabilities register?

The register helps Telford & Wrekin Council and partners understand more about the needs of children with disabilities across the borough. This helps services plan for the future and ensure residents needs are met.

If you have any questions regarding the Children with Disabilities register or require further information, please email shortbreaks@telford.gov.uk.



SUN PROTECTION ADVICE

Children's skin is much more sensitive than adult skin, and damage caused by repeated exposure to sunlight could lead to skin cancer developing in later life.

The NHS recommend that children should:

Cover up with suitable clothing
(shoulders and neck covered)

Apply sunscreen to areas not protected by clothing, such as the face, ears, feet and backs of hands.

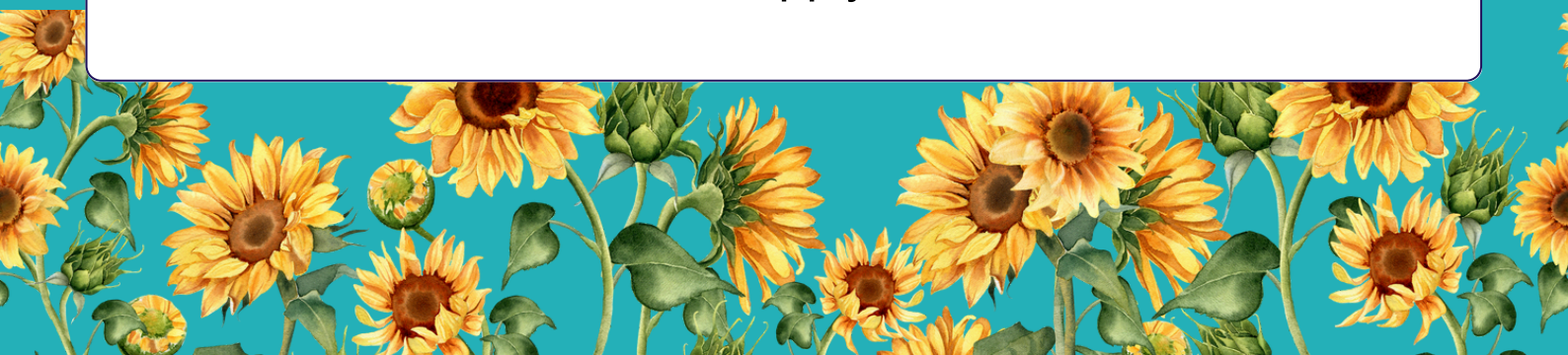
Wear **at least** SPF30 sunscreen (we recommend SPF 50)

Our policy at nursery is that children must wear suncream and wear a hat to keep them safe in the hot and sunny weather.

PLEASE PROVIDE A NAMED HAT FOR YOUR CHILD.

If your child attends a morning or afternoon session only, please apply suncream before they arrive.

If your child is at nursery all day please apply suncream before they arrive and provide a named bottle of suncream so that we can reapply after lunch.





KEY DATES



Date	Event
Friday 13th June	Graduation Photos (for children starting school in September) 
Thursday 19th & Friday 20th June	 Fun Sports Day
Monday 30th June - Thursday 11th July	Stay and Play (details to follow) 
Friday 18th July	End Of Term
Monday 21st July	PD Day
Monday 1 st September	PD Day
Tuesday 2 nd September	Start of the Autumn Term



SOCIAL MEDIA

Click on the image to access our facebook page



Your Child's Learning

Don't forget to check out our website to find out about all the exciting things the children have been learning about this week:



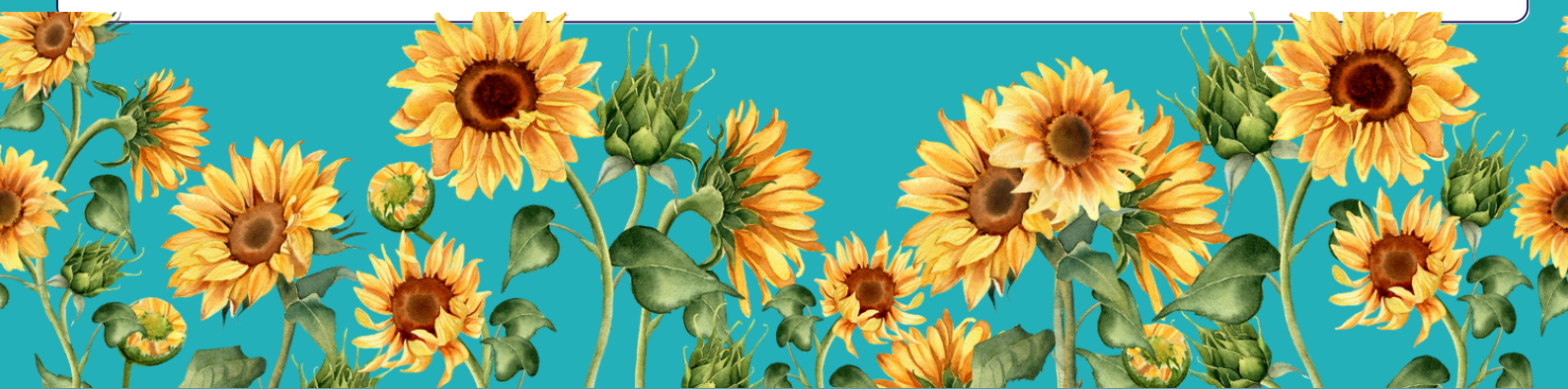
Admin Office Opening Hours

The office operates from Monday to Thursday, with opening hours from 7:30 AM to 3:45 PM.

On Fridays, the office closes earlier, at 1:00 PM.

Should you need assistance or have any inquiries outside of these hours, you can call the out-of-hours phone on **07340 751171**.

This ensures that support or urgent matters can be attended to even when the office is closed.





FAMILY SUPPORT



Please see below for an exciting update from the Telford Children's Autism Hub!



Telford Children's Autism Hub

We are thrilled to announce that we have received extra funding, allowing the Hub to extend its services.

We are now able to provide valuable information, advice, and support to families who are at the pre-diagnosis stage and are on the pathway awaiting an Autism assessment.

Our Children's Autism Hub is open to all children and young people aged 0-18 years and their families, who have a diagnosis of Autism or are on the pre-diagnosis pathway for Autism. To access our Children's Autism Hub you need to be a resident of Telford and Wrekin.

For more information, please go to our website : [About Children's Autism Hub | Telford Autism Hub](#)

[Read more on our pre-diagnosis offer](#)

[SEND Newsletter Information - Feb/Mar](#)



Follow the link below to access more information and the SEND family newsletter:

[SEND Family Newsletter March 2025 - SEND - Local offer](#)



FAMILY SUPPORT



Telford & Wrekin
Co-operative Council

Protect, care and invest
to create a better borough



Telford and Wrekin

FAMILY HUBS

**"We only argue
when the kids
are in bed"**

Are you worried about how much you argue with your partner/ex?

You don't need to weather the storm alone.

To find out more about the support Telford & Wrekin Council
can offer you please visit our website

www.telford.gov.uk/familyhubs



SCAN ME



FAMILY SUPPORT



**Final reminder to working parents:
Apply for your childcare code to use the support
from April**



In the beautiful chaos of parenthood, balance is everything. Childcare Choices is here to help you find the support that fits your family, giving your child a great start and you the choices you need.

If you're an eligible working parent in England, you can [apply for your code online on GOV.UK](#) for:

- Up to [15 hours childcare](#) per week for your child between 9 months until they turn 3 years old, over 38 weeks of the year.
- Up to [30 hours childcare](#) per week for your 3 or 4 year old, over 38 weeks of the year.

The deadline to apply for a code is 31 March to use the support from April. You will then need to reconfirm your code every 3 months on your GOV.UK account.

Make sure you apply as early as possible and speak to your provider to find out more about their arrangements.

**Click here to apply for 15 or 30 hours childcare
for working families**



FAMILY SUPPORT



**Check out the Better Health,
Healthier families website!**



This useful website has food facts,
recipes, activities and information of
children's weight.

**[HTTPS://WWW.NHS.UK/HEALTHIER-
FAMILIES/](https://www.nhs.uk/healthier-families/)**

**Shropshire and Telford and Wrekin
Dental Advice Line**

Do you have an
urgent dental
problem or need
dental advice?

Are you looking
for an NHS
dentist for
routine care?

Monday to Friday
0800-2100

01743 237916

Shropshire Community Health **NHS**

**Telford Public Health Nursing
Service**
Healthy you, Healthy Future

Telephone Number
0333 358 3328

Text 07520 619 053

School nurse 07520 619 051

Follow on twitter

@ShropPHNurse

Open 9am-4.30pm
excluding bank holidays



Parents Opening Doors
'Together we can make a difference'
<https://www.podstelford.org/>



Right help at the right time

Did you know that 'The Oak Family Hub' is located at The Wakes and
offers free help and support to residents who are navigating their way
through parenting?





Are you or your partner expecting a baby or have a child under two?

**You can access support, information and
guidance from our team !**

We can help with a wide range of topics such as:

- **Finances**
- **Childcare**
- **Emotional Wellbeing**
- **Mental Health**
- **Activities and Support**
- **Social Isolation**
- **Relationships**
- **Confidence building**

**For more information from the Social Prescribing Team
please call 07434 869248
or email perinatal@telford-mind.co.uk**